

For Structural Fire



Current State : Structures



15th March,2025



SRI | (408) 666-1906 | sri@srinivasan-m.com



FUTURE STATE: LOS ANGELES, CALIFORNIA

15th
March, 2025

SRI | (408) 666-1906 | sri@srinivasan-m.com



15th March,2025



SRI | (408) 666-1906 | sri@srinivasan-m.com







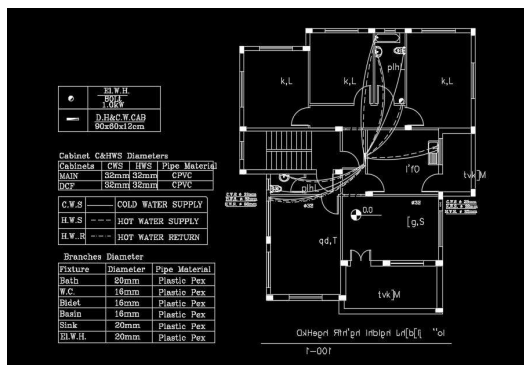
Innovating Fire-Fighting Procedures

Utility Service Responsibility



Homeowner Responsibility

Municipality Waterline Blueprint





15th March,2025



SRI | (408) 666-1906 | sri@srinivasan-m.com



Municipality Waterline: Blueprint

●	El.W.H. 80L 1.0kW
—	D.H&C.W.CAB 90x60x12cm

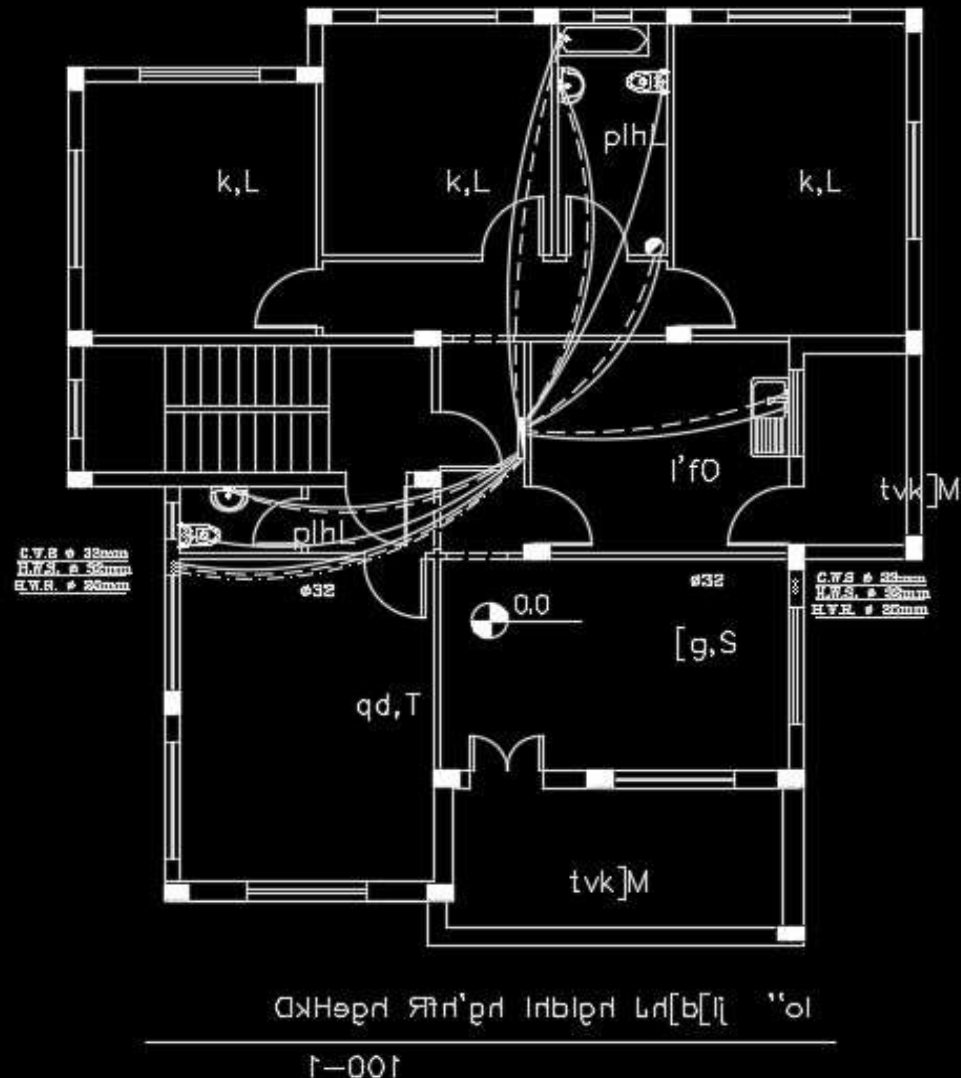
Cabinet C&HWS Diameters

Cabinets	CWS	HWS	Pipe Material
MAIN	32mm	32mm	CPVC
DCF	32mm	32mm	CPVC

C.W.S	—	COLD WATER SUPPLY
H.W.S	---	HOT WATER SUPPLY
H.W..R	----	HOT WATER RETURN

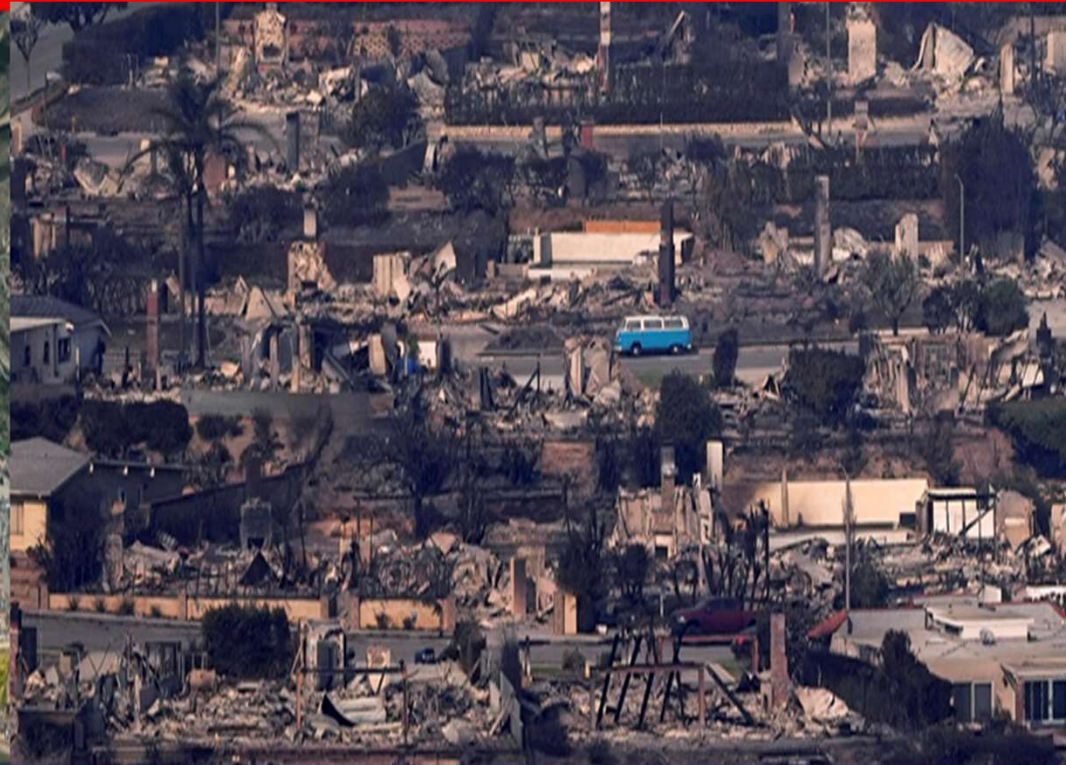
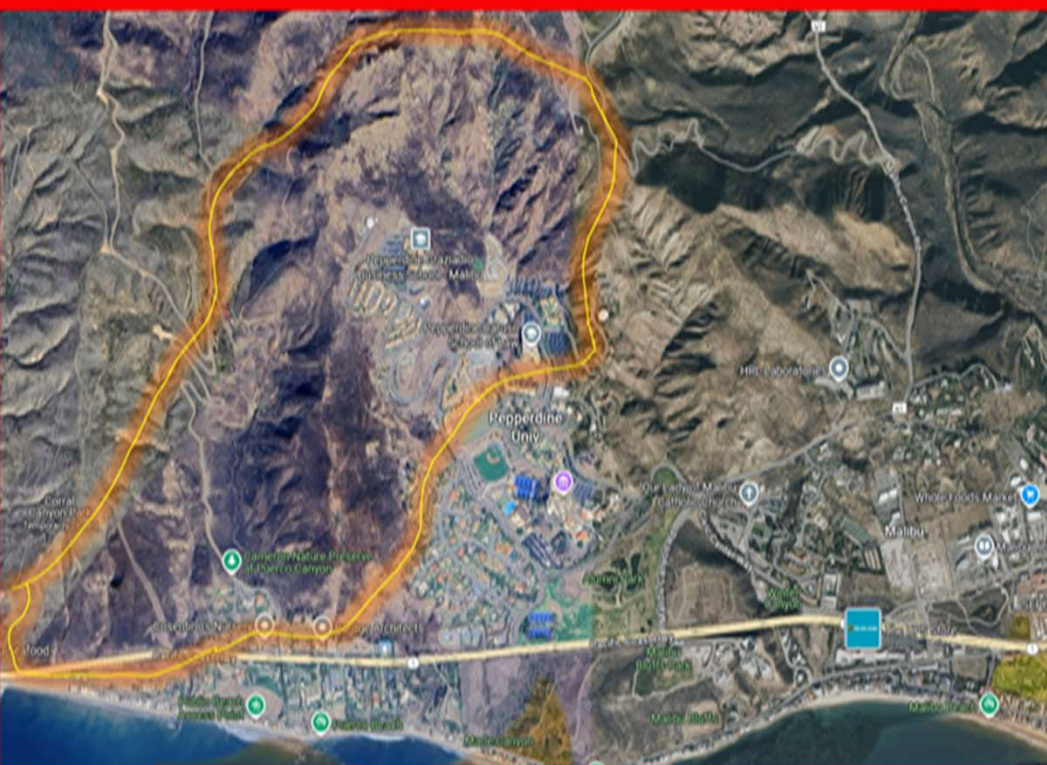
Branches Diameter

Fixture	Diameter	Pipe Material
Bath	20mm	Plastic Pex
W.C.	16mm	Plastic Pex
Bidet	16mm	Plastic Pex
Basin	16mm	Plastic Pex
Sink	20mm	Plastic Pex
El.W.H.	20mm	Plastic Pex





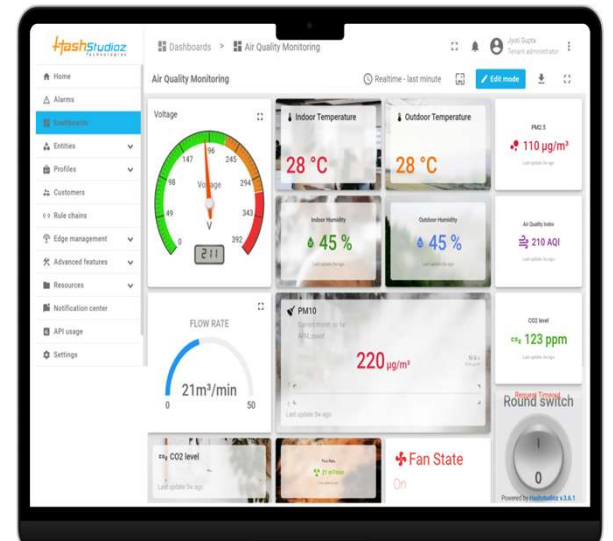
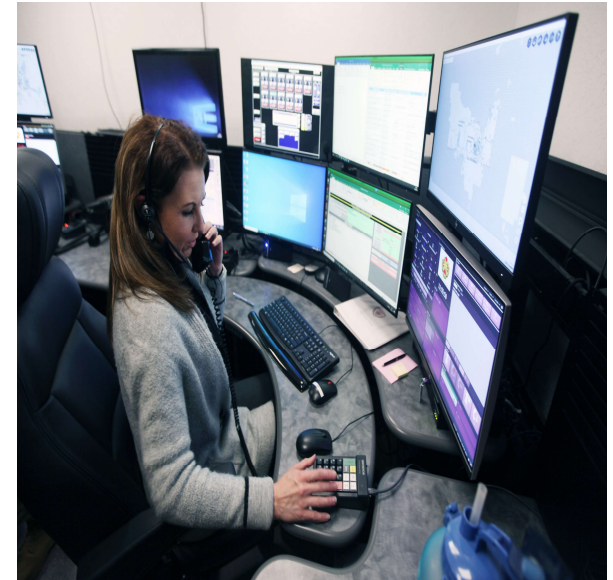
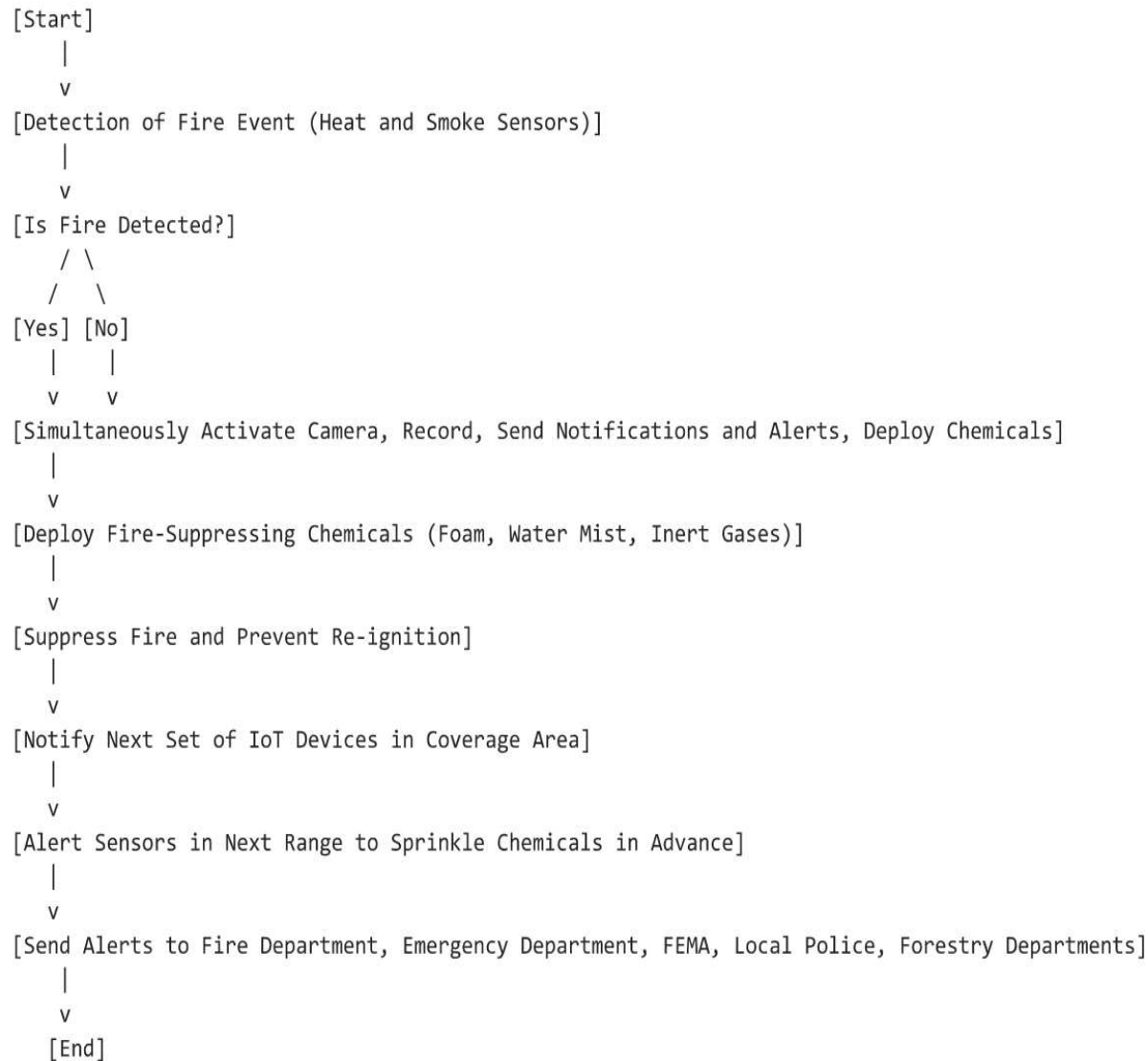
**Cooling Station
Must be built
near these
hotspots in LA**





CALIFORNIA WILDFIRE : IoT REMOTE MONITORING / DASHBOARDS & ALERTS

WILD FIRE : REMOTE MONITORING WORK FLOW





For Wild Fire



1/01/2025

SRI | (408) 666-1906 | sri@srinivasan-m.com



ARTIFICIAL RESERVOIR AS A SOURCE TO EXTINGUISH FIRE

1. Controlled Blasting



2. Artificial Reservoirs with Rain water



3. Create a Cooling Station from the Artificial Reservoirs



4. Pump from the Cooling Station / Reservoirs



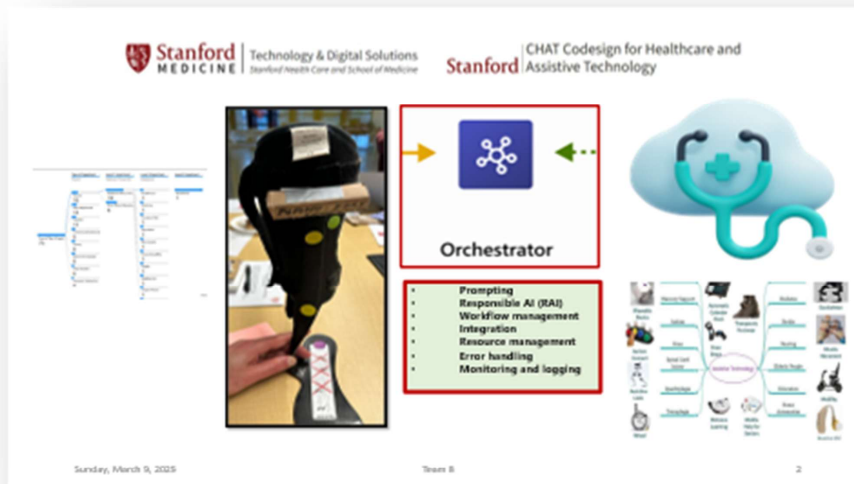
The background of the slide is a stylized American flag. The top half features a blue field with white stars, and the bottom half features red and white horizontal stripes. The text is overlaid on the left side of the flag.

Assistive Technology with Emergency Alerts For Seniors and People with Impairments

Integrating Assistive Technology with Wildfire and Emergency Preparedness

The goal of this project is to develop **assistive technologies for seniors and individuals with impairments** that integrate **advanced AI technologies and edge computing** to enhance emergency preparedness. This aligns with the **wildfire mitigation strategies proposed to the Emergency Council of Santa Clara County**, ensuring that vulnerable populations receive timely support and protection.

As discussed at the **Stanford University CHAT: Co-design for Healthcare and Assistive Technology** workshop, the focus is on **replacing traditional assistive devices with highly sophisticated ones powered by advanced AI technologies and edge computing**, enabling them to **predict, prevent, suggest, adjust, monitor, and alert everyone involved in the patient's journey about emergencies like wildfires and floods ahead of time**. These recommendations have been forwarded to the fire chief for early implementation, reinforcing the county's commitment to safeguarding those most at risk.



Saturday, March 8, 2025

SRI | sri@srinivasan-m.com | (408) 666 -1906

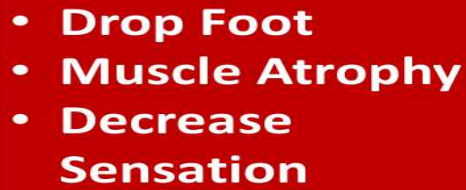
1

15th March,2025



SRI | (408) 666-1906 | sri@srinivasan-m.com

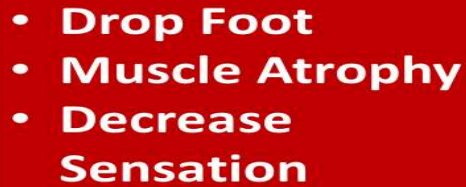
17



- **Low (Personal Alert)**
- **Medium (Caregiver)**
- **High (EMS)**



1



- **Low (Personal Alert)**
- **Medium (Caregiver)**
- **High (EMS)**



1

Urgent Fire Mitigation and Structural Safety Measures

Dear Board Members, Fire Chief, and Team,

It gives me immense satisfaction to actively contribute to expediting efforts in mitigating wildfires, structural fires, and their devastating impact on lives and property.

I strongly recommend **designating burnt areas as high-risk fire zones**, not only for wildfires but also for structural fires. It is imperative that we **rebuild with enhanced fire-resistant architecture** as mandated by the city, county, and state. New homes must incorporate **external fire-extinguishing sprinklers and IoT monitoring systems** that alert first responders, senior centers, and individuals with disabilities.

Key safety measures should include:

- **Roof-mounted sensors and sprinklers** that detect and respond to fire intensity.
- **Automated activation of utility service sprinklers** if temperatures exceed a critical threshold.
- **Integration of artificial reservoirs and alternative water sources** as a first line of defense before emergency responders arrive.
- **High-pressure pipes connected to fire hydrants**, ensuring immediate water availability.
- **Cooling stations near high-risk areas** like Malibu Drive, funded through a joint venture between the city and local communities.

Additionally, I recently participated in a **workshop at Stanford University on assistive technology development for individuals with impairments**. I strongly emphasized the need to **incorporate advanced monitoring and alerting systems** to ensure that seniors and people with disabilities receive **early warnings** in emergencies like wildfires or floods, allowing them to evacuate to safety in time.

This is a **shared responsibility**—not one that falls solely on law enforcement or fire teams, but on every individual. I am committed to raising awareness and integrating emergency mitigation into every transformative effort. **In California, disaster preparedness should be a part of everyday life.**

A detailed breakdown of shared responsibilities and implementation strategies is provided in the attached slides. I urge us to take swift action to safeguard our communities and prevent future disasters.

Looking forward to your support in making this a reality.

Sincerely,

Sri

A Proud Resident of City of Santa Clara

